

LEGEND	
	Direction of Travel
	Sign
	North Arrow
	Tubular marker
	Certified TCP
	HLWD

Figure # 7.8 in the TCMWR 2015 Edition  
Single Lane Alternating

This Traffic Control Plan is designed to accommodate patch work on Spadina Ave. There are two patches at this location  
Work to commence Monday, Aug. 13th, 2018 and is expected to be completed in one day, however permit will be requested for a week

Work hours shall be from 7:00 am - 5:00 pm  
All signs and traffic devices shall be placed in compliance with WCB and the TCMWR



**RIGHT ON FLAGGER**  
EST. 2012



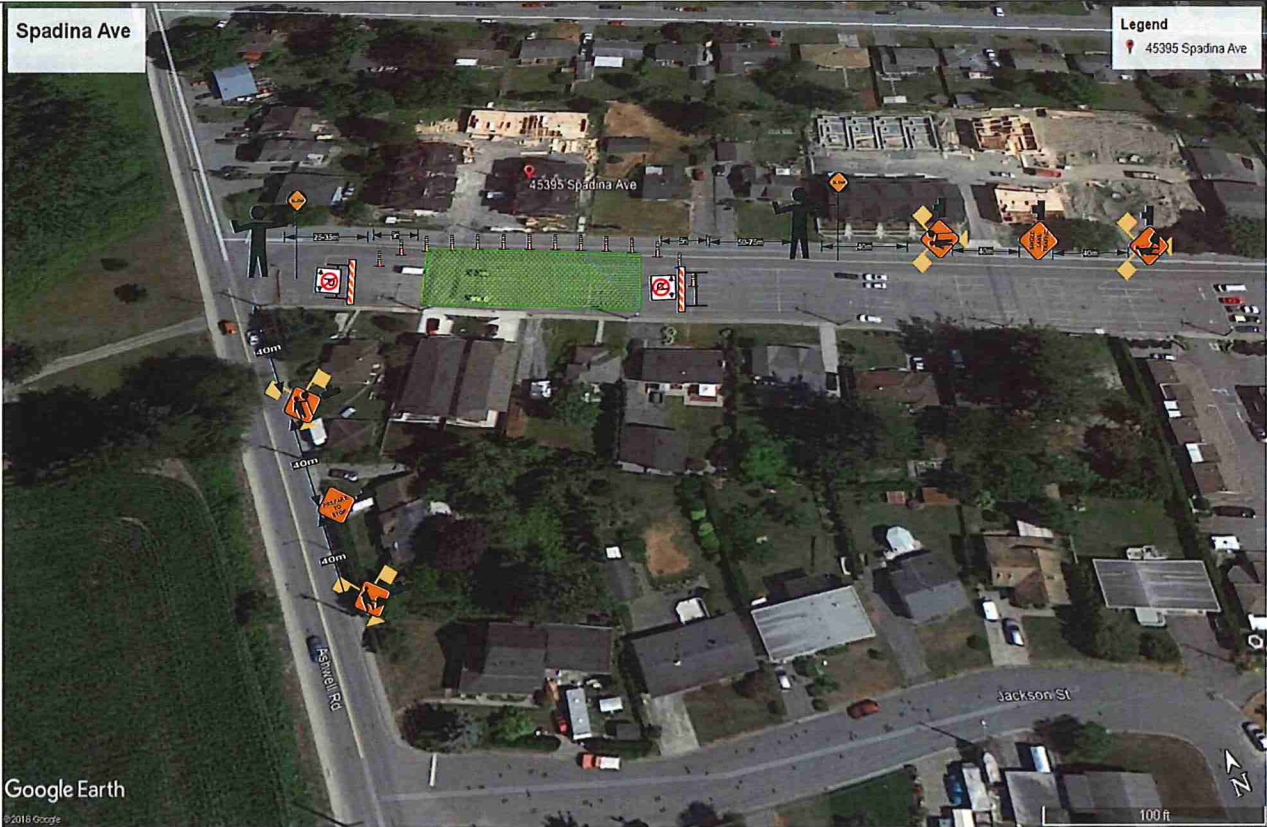
**LEWER DRIVING**

Drawing NTS
Drawing No. LP-Spadina Ave - 01

Spadina Ave

Legend

45395 Spadina Ave



Google Earth

©2016 Google

LEGEND

- Direction of Travel
- Sign
- North Arrow
- Tubular marker
- Certified TCP
- HLWD

Figure # 7.8 in the TCMWR 2015 Edition  
Single Lane Alternating

This Traffic Control Plan is designed to accommodate patch work on Spadina Ave. There are two patches at this location  
 Work to commence Monday, Aug. 13th, 2018 and is expected to be completed in one day, however permit will be requested for a week

Work hours shall be from 7:00 am - 5:00 pm

All signs and traffic devices shall be placed in compliance with WCB and the TCMWR



Drawing NTS

Drawing No. LP-Spadina Ave - 02